

GA JEWEL
Johns Mountain WMA Land
20-21 September 2024

As of 19 SEPT 2024

Race References & Course Overview

- [Runner Handbooks | georgiajewel](#)

Race Start/End Summary

Race	Start	Finish	Cutoff
100 Miler	12:00pm 15Sept at Dalton Convention Center	Dalton Convention Center	23:00 Saturday
50 Miler	07:30 16Sept Dry Creek Equestrian Parking Lot		23:00 Saturday
35 Miler	07:35 Dry Creek Equestrian Parking Lot		19:20 Saturday
18 Miler	08:30 Snake Creek Hwy 136 Trailhead		14:30 Saturday

**** 18 Miler does not come through Johns Mountain**

100 Mile-Race Details
Start 12:00 EST Friday 20SEPT2024

100 Mile

Aid Station	Mile	Miles to next AS	Miles to Finish	Cut-off Time	Pacer	Crew Access/ Drop-Bag
Convention Center	0	3.2		12pm		
Powerlines	3.2	8.4	96.8	1PM		NO
Stover	11.6	7.2	88.4	NO DROPS		NO
Snake	18.8	6.5	81.2	6PM Friday		Yes/Yes
Pocket Rd.	25.3	3.3	74.7	8:15PM Friday		NO
John's Mtn	28.6	7.5	71.4	NO DROPS		NO
Arrive at Dry Creek	36.1	6.7	63.9	12AM Saturday		Yes/Yes
Finish Loop #1	42.8	7.2	57.2	2AM Saturday		Yes/Yes
Finish Loop #2	50	7.2	50	4:30 AM Saturday	Yes	Yes/Yes
Finish Loop #3 <i>*this is the same loop as #1</i>	57.2	6.7	42.8	7AM Saturday	Yes	Yes/Yes
Finish Loop #4 <i>*this is the same loop as #2 & Leave DC</i>	63.9	7.5	36.1	9:15 AM Saturday	Yes	Yes/Yes
John's Mtn	71.4	3.3	28.6	NO DROPS		NO
Pocket Rd.	74.7	6.5	25.3	1:15 PM Saturday	Yes	Yes/NO
Snake Creek	81.2	7.2	18.8	3:30 PM Saturday	Yes	Yes/Yes
Stover	88.4	8.4	11.6			NO
Powerlines	96.8	3.2	3.2	9:30 PM Saturday		NO
Finish	100			11 PM Saturday		

50 Mile-Race Details
Start 07:30EST Saturday 21SEPT2024

50 Mile

Aid Station	Mile	Miles to next aid	Miles to Finish	Crew Access/ Drop-Bag	Cut-off Time	Pacer
Start	0	6.7			7:30am	NO
Finish Loop #1	6.7	7.2	43.3	NO		NO
Finish Loop #2	13.9	7.5	36.1	NO	11:20am	NO
John's Mtn	21.4	3.3	28.6	NO		NO
Pocket Rd.	24.7	6.5	25.3	NO		NO
Snake Creek	31.2	7.2	18.8	Yes/Yes	4pm	Yes
Stover	38.4	8.4	11.6	NO		NO
Powerlines	46.8	3.2	3.2	NO	9:45pm	NO
Convention Center	50				11pm	

35 Mile-Race Details
Start 07:35EST Saturday 21SEPT2024

Aid Station	Total Miles	Miles to next aid	Miles to Finish	Cut-off Time
START Dry Creek	0	7.5		7:35am
John's Mtn	7.5	3.3	27.5	
Pocket Road	10.8	6.5	24.2	10:43am
Snake Creek	17.3	7.2	17.7	12:48pm
Stover	24.5	8.4	10.5	
Powerlines	32.9	3.2	3.2	
Convention Center	36.1			7:35pm

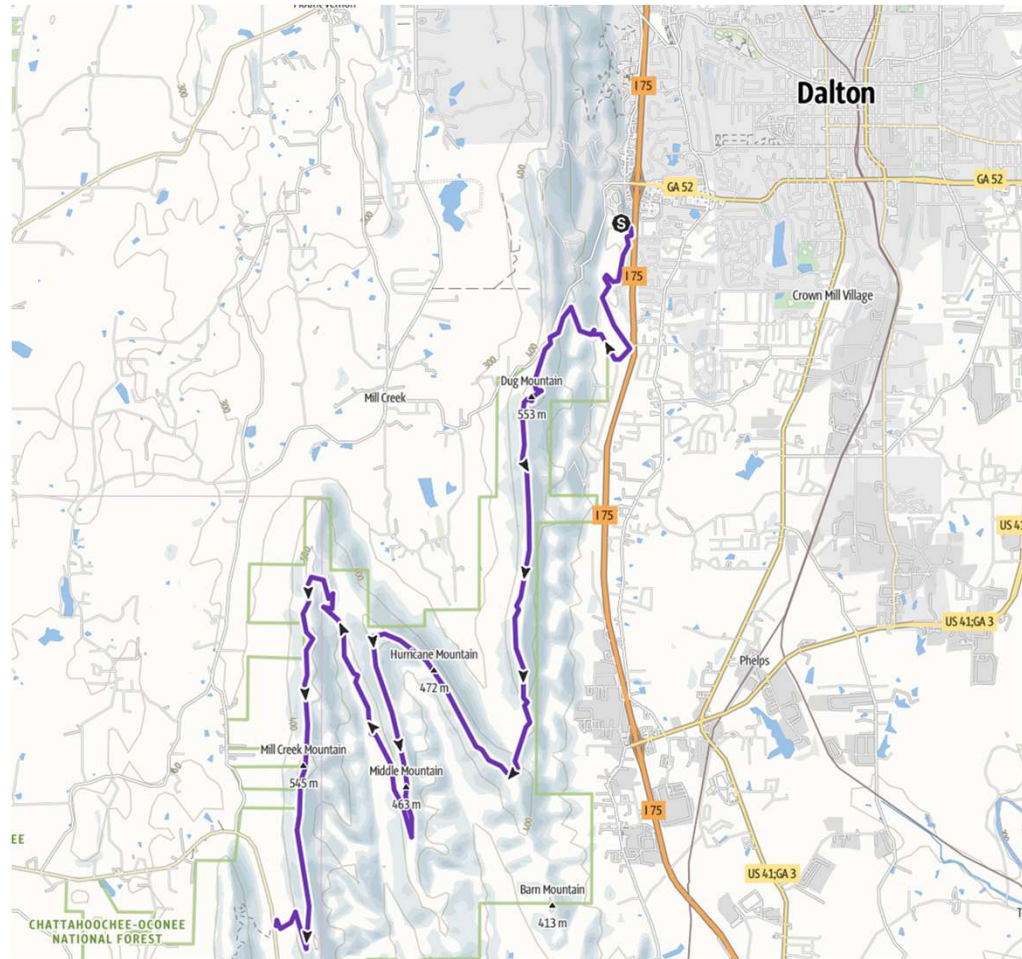
*Must keep at 19min: 57sec mile pace

18 Mile-Race Details

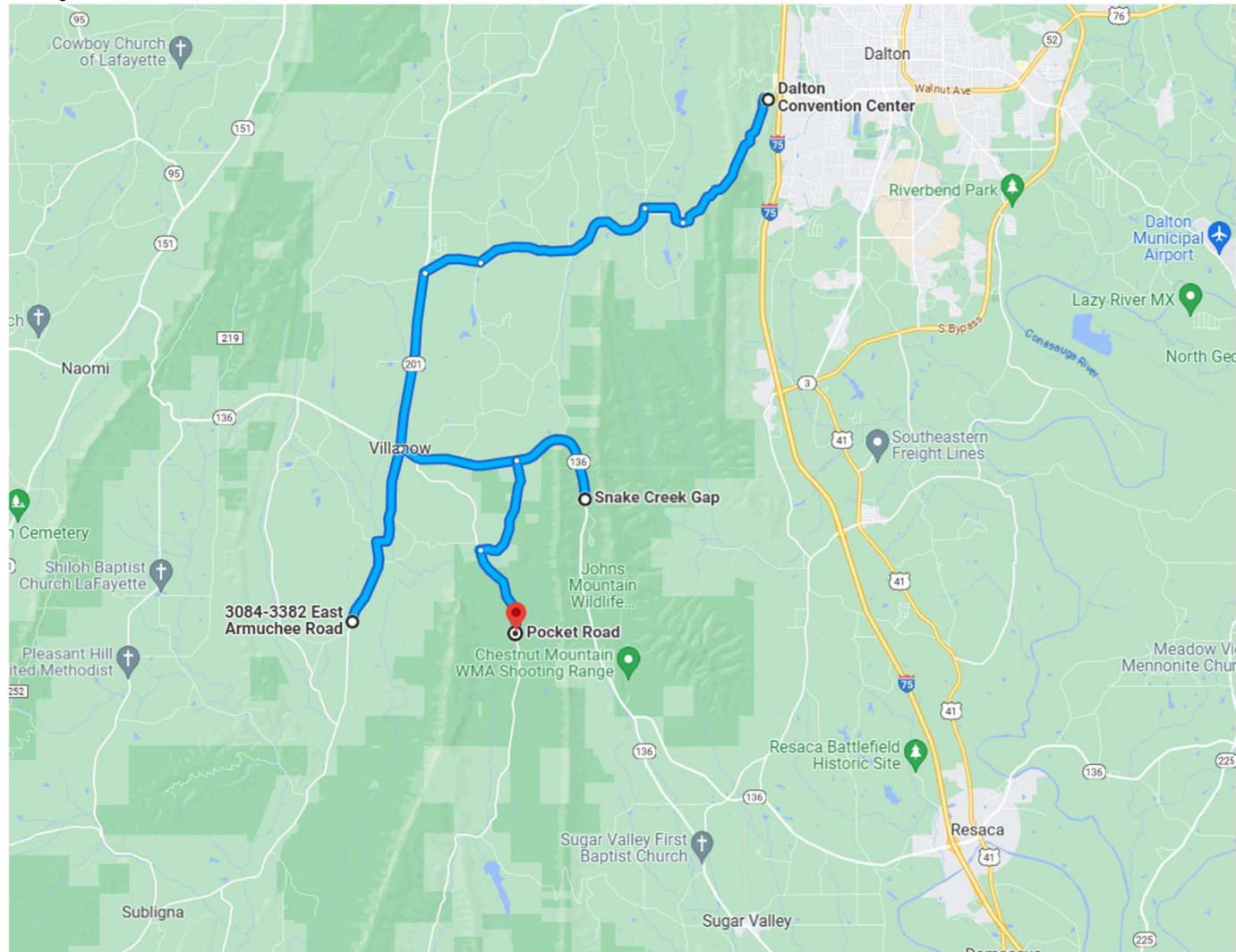
**** 18 Mile Runners to not come thru Johns Mountain.**

Aid Station	Total Miles	Miles to Next Aid	Miles to Finish	Cut-Off Time
Start Snake Creek	0	7.2		8:30am
Stover Rd.	7.2	8.2	11.4	10:32am
Powerlines	15.4	3.2	3.2	1:17 pm
Finish	18.6mi			2:30 pm

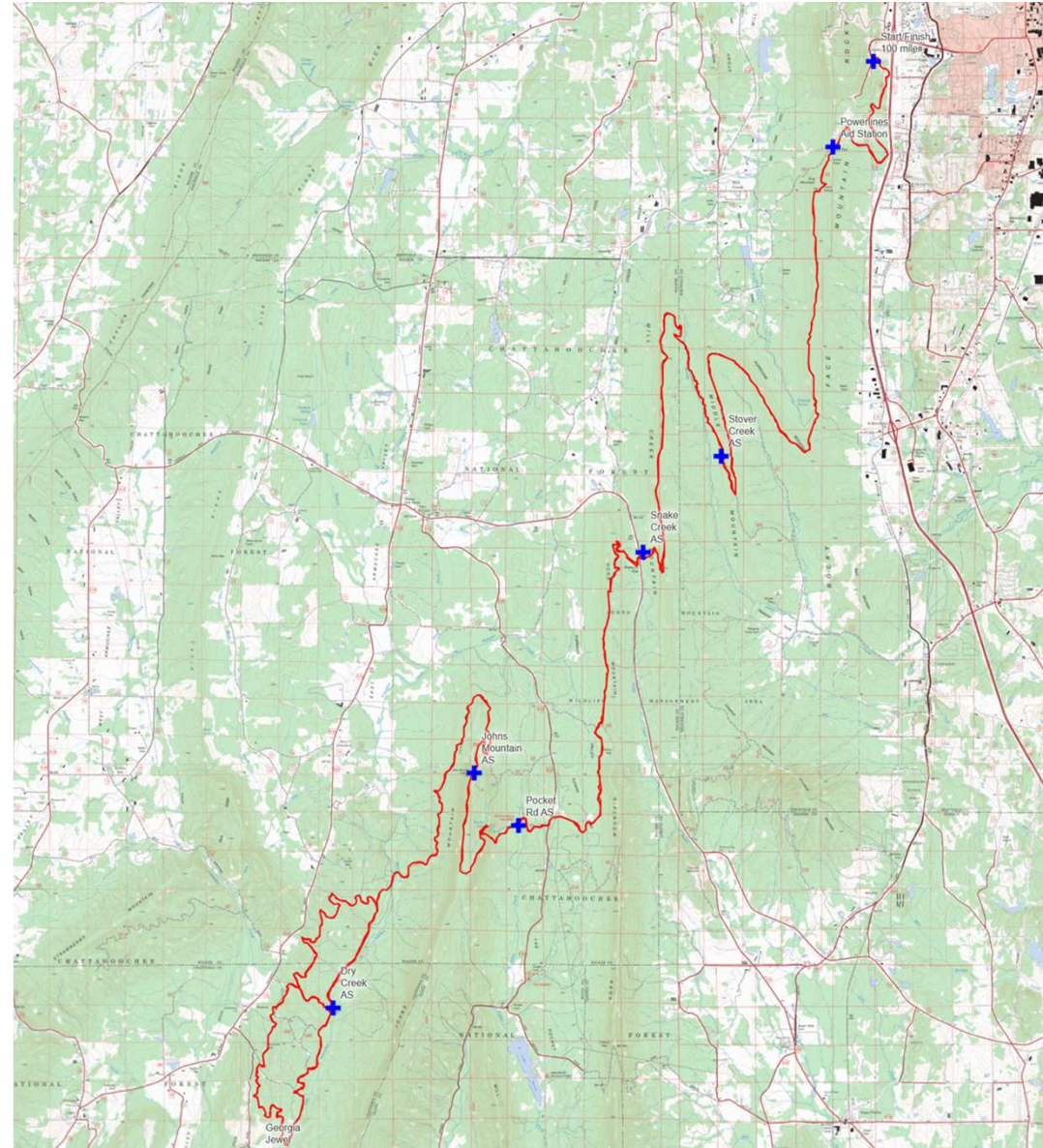
*Must keep a 19min/ 21sec mile pace



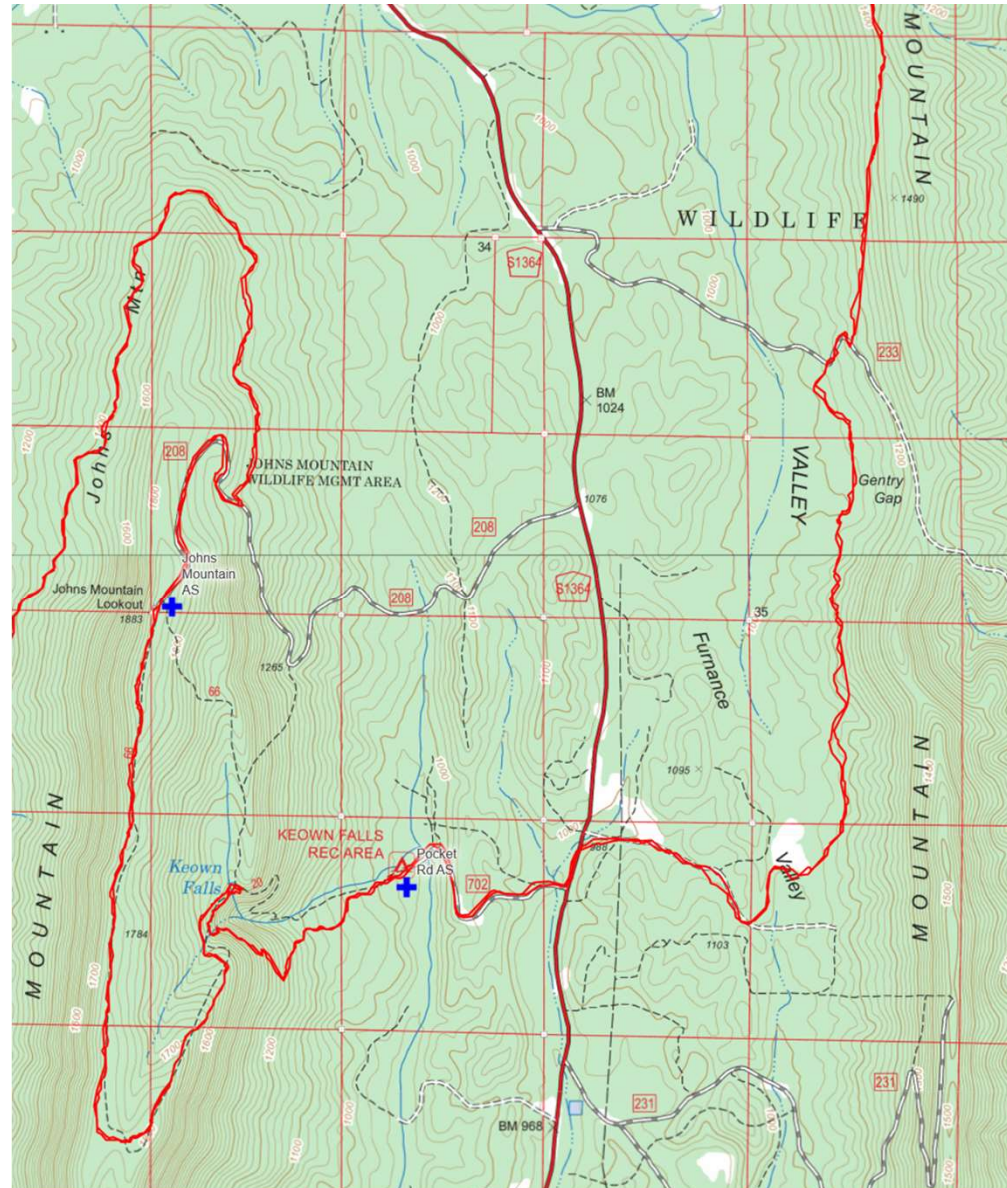
Driving Details for 50/100 Mile Race



50/100 Mile Course Map
- 35 and 50 Mile Starts at Dry Creek



Johns Mountain and Pocket Blowup



NWGA ARES
Team Cherokee
Johns Mountain

GA JEWEL- Personnel

The following personnel have committed to W1JKU that they will assist with GA JEWEL vic Johns Mountain WMA on 20-21 SEPT 2024.

- If you're not on the list, and would like to participate, please contact Rob w1jku.us@gmail.com or 404-710-9630

Confirmed	Call	Name	Email	Comment
Yes	W1JKU	Rob Bruderer	W1JKU@ARRL.NET	
Yes	KO4SAO	David Landers	David.Landers67@gmail.com	
Yes	KO4PWB	Rod Atwell	ko4pwb@gmail.com	
Yes	KO4UQF	Bill Sangster	Bill.ewc08@yahoo.com	
Yes	KK4YLG	Ryan Rucker	kk4ylg@outlook.com	
Yes	K4QEX	Jay Street	jay@greatoak.net	Help with Setup Friday then leave Fri Evening.
Yes	KN4LSE	Tom Perry	tomperry4922@gmail.com	
Yes	WX4WCS	Abby Wells	awells4600@gmail.com	

Hank-K4HYJ Cellphone: 706-463-1704

Emergency's: Contact Trade Center if Emergency Occurs during Race, let them make decision...

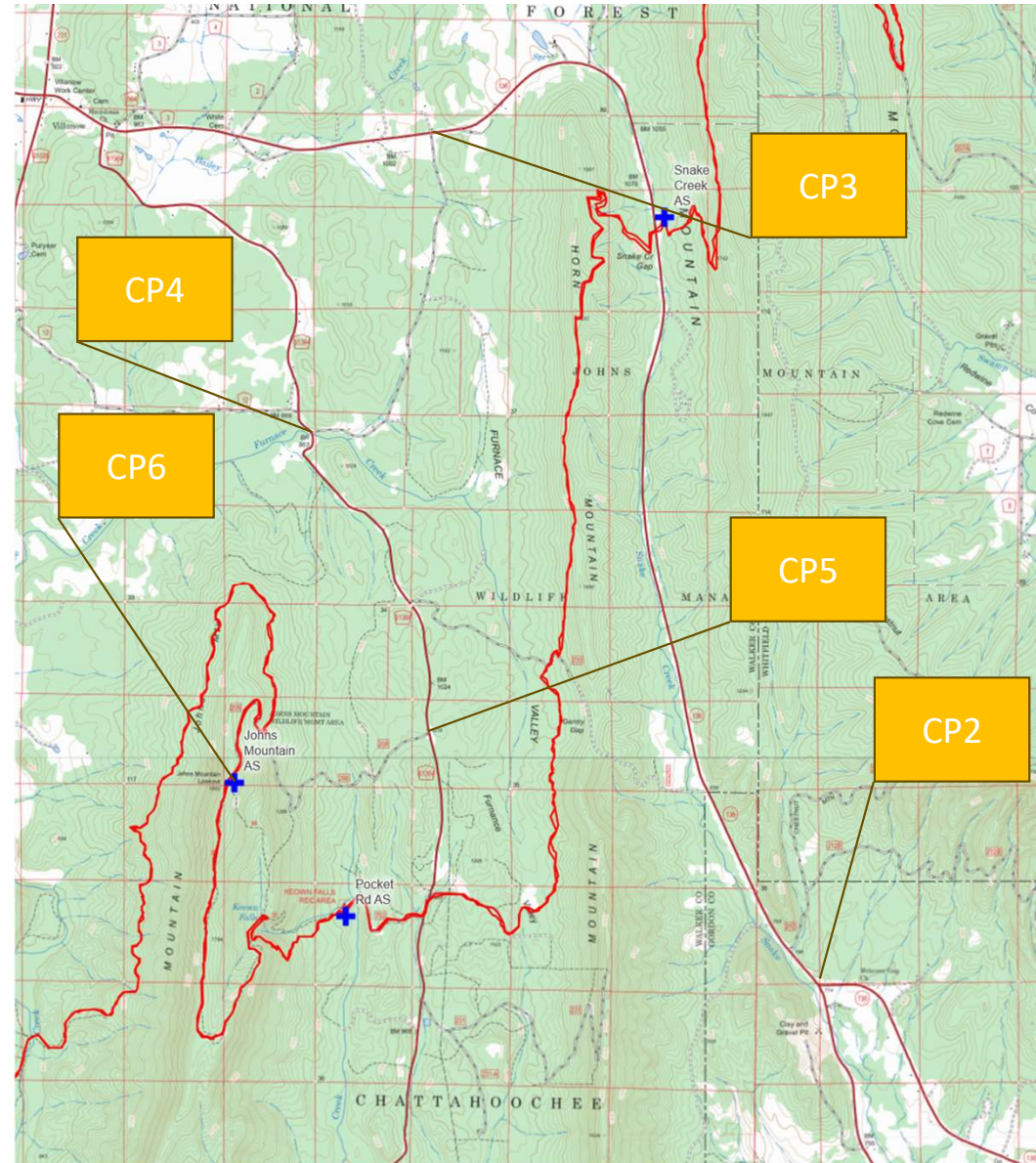
Directions to Johns Mountain

- I-75N to exit 320—Hwy 136—Resaca—Go West
- (136 runs to a stop sign. Turn right at the stop sign (this is still 136)
- Turn Left on Furnace Creek Rd. — 34.670982, -85.080127
- Turn Left on Pocket Rd at the stop sign — 34.649021, -85.090906
- Turn Right on FS 208—34.6267521, -85.0805390
- We will be at the top of the mountain



Driving to Johns Mountain from HWY 136 from CheckPoint (CP)-2

- CP1: I-75N to exit 320—Hwy 136—Resaca—Go West
- CP2: (136 runs to a stop sign. Turn right at the stop sign (this is still 136)
- CP3: Turn Left on Furnace Creek Rd. — 34.670982, -85.080127
- CP4: Turn Left on Pocket Rd at the stop sign — 34.649021, -85.090906
- CP5: Turn Right on FS 208—34.6267521, -85.0805390
- CP6: We will be at the top of the mountain



Winlink Callsigns and Designated Team Leads

Location	Winlink Callsign	Team Leader	
Trade Center	W4DRC	W4DRC (K4HYJ)	
Stover Road	W4KIB	W4KIB	
Snake Creek Gap	K4WOC	W4WOC (AF4DN)- Felton	
Pocket (Falls)	W4HHH	W4HHH (K9HRO)	
Johns Mountain	W1JKU	W1JKU- Rob	
Dry Creek	K4SJR	K4SJR-Frank	

Johns Mountain Timeline

- Voice and Packet Capability must be fully operational No Later than 15:30 Friday
- No runners Expected 22:30 Friday – 01:30 Saturday but we will be prepared....
- Close-Down 15:30 Saturday

Station Setup/Close Down Timeline

Stover Rd:

Opens 1PM Friday

No runners after 5PM Friday until 5AM Saturday

Closes 7PM Saturday

Snake Creek Gap:

Opens 2PM Friday

No runners after 6:30PM Friday until 3:30AM Saturday

Closes 5PM Saturday

Pocket (Keown Falls):

Opens 3PM Friday

No runners after 9PM Friday until 2AM Saturday

Closes 3:30PM Saturday

Johns Mtn:

Opens 3:30PM Friday

No runners after 10:30PM Friday until 1:30AM Saturday

Closes 3PM Saturday

Dry Creek:

Opens 5PM Friday

Closes Noon Saturday

Let me know if you have any questions.

Spreadsheet/Reporting Instructions

- Do not delete rows from spreadsheet
 - If needed add rows to spreadsheet
 - Abbreviations:
 - DNS- Did Not Start
 - Drop
 - CH35 Runner “Changed” to Race 35. Then add Runner to bottom of the 35Mile Spreadsheet.
 - Enter Time in 24hour Format... Example **22:12**
 - Keep a Log of all Runner Changes after Race Starts. Expect approx a dozen changes during the race.
 - Copy and Paste between Spreadsheet and Winlink 1ColumnX – 1ColumnX
 - Required to Send Winlink to both Trade Center as well as next Station...
1. Please notify the Trade Center of any runner DROPS (DNF) and runner race changes via voice comms and place in your spreadsheet - Trade Center will be follow up with an ICS-214 to all stations.
 - If a runner changes from one race to another, place CHXX in the original racer timeslot for your aid station (where XX is the race they moved to – do not delete the runner from the original race spreadsheet, i.e. CH18)
 2. Please keep a whiteboard/chalkboard/poster board of all DROPs and bib #'s of runners that changed races for the entire race so all aid station workers that come and go can see the changes in case there is a mistake on the spreadsheet – Trade Center will also be following up with an ICS-214.

Additional Instructions

1. Johns Mountain Station Reporting
 - A. ARES Sign-In/Out Roster
 - B. Significant Events (Use Spiral Notepad) initially as list will become long.
 - C. Keep Runner Change Sheet (Use Clipboard for quick access, list should not be too long)
 - D. ICS205 Laminated at Radio Station (W1JKU to Generate)
2. There will be gateway established on Johns Mountain by Don (Callsign?).
3. HQ/Radios will feed from W1JKU Truck
 1. Vehicle VHU/UHF Antenna-- ID5100 (Channel A Repeater/B- Race Simplex)
 2. Vehicle Screwdriver Antenna (VHF/UHF/HF thru 40m --- FT857D (Use Only 1 Channel at a time)
 3. IC-7100 via Buddy Stick 6-40M HF Winlink Capability
 4. 2 Sets of Solar Panels to feed batteries

** Intent Minimal Setup to accomplish mission with redundancy baked in...

** Will utilize Internet/Cellphone for Winlink as needed.

** Will Broadcast APRS position for Cherokee ARES / Others Visibility of Station Status

Radio's

Radio	Primary Freq	Alternate Freq
ID5100- Channel A	Primary Repeater (W4DRC): 145.230Mhz (-), PL: 141.3 (Fort Mtn)	Alt Repeater (N4BZJ) 147.135Mhz (+), PL: 141.3 (Dug Gap Mtn)
ID5100- Channel B	GA Jewel Simplex: 146.535 ** We may be relaying Voice traffic between stations based on our location... and then Relay to N4BJZ- Alternate Repeater	
Individual HT	Johns Mtn Internal Coms: 145.710	439.600
IC7100-Winlink	Spin the Dial finding best Winlink Propagation W4EDP-10 (Lookout Mtn) 145.750 Primary Packet Freq if VHF is used.	
FT857D-APRS/Spare	TBD	TBD

Winlink Packet Network Frequencies/SSID [path recommendations]:

Winlink Packet Network Frequencies/SSID (locations):

- - 145.550 gateway
 - **N4JGW-10 (Dalton West)**
- 145.610Mhz gateway
 - **N4RMG-10 (Johns Mountain overlook)**
- 145.710Mhz gateways:
 - **K4WOC-10 (Calhoun)**
 - **K4HYJ-10 (Dalton North)**
- 145.710Mhz digipeaters
 - K4HYJ-15 (Dalton)
 - KN4KBL-15 (Fort Mtn)
- 145.750Mhz gateways:
 - **WD4EMA-10 (Chatsworth)**
 - W4VO-10 (Mt Alto)
 - W4EDP-10 (Lookout Mtn)
- 145.750Mhz digipeaters:
 - N4RMG – 15 (Johns Mountain tower)
 - WD4EMA-15 (Fort Mtn)

AF4DN-15 (Calhoun)

Individual / Protective Equipment (IPE)

Item
Reflective Vest
HT – VHF/UHF with Spare Battery and Frequencies Loaded
Hat
Sunscreen and Bug Juice
Water, Snacks, Food
Chair
Flashlight
Sleeping Bag, Cot, or Shelter (Else Sleep in Car)
HQ Tent/Shelter incase of Rain
Flashlight
Medications
No Campers this year. Not enough Room. We need to leave room for Aidstation and other volunteers

Station Requirements

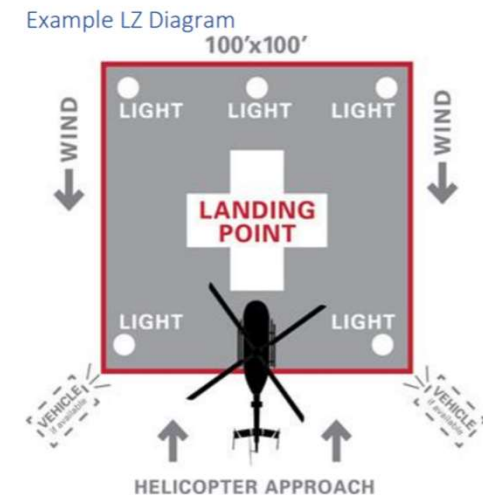
Equipment	Status	Primary	Alternate	Comments
Packet Radio with Laptop	Confirmed	KO4UQF	W1JKU	
VHF Antenna and Mounting Hardware	Confirmed	KO4UQF	KO4UQF	Jpole/Truck.
COAX	Confirmed	W1JKU KO4UQF	KO4UQF	Antenna to Radio (50-100ft?)
Batteries	Confirmed	W1JKU KO4UQF	TBD	Ability to operate Station 24hours
Clipboards and Tracking Chart	Confirmed	W1JKU		W1JKU will provide Clipboards
Solar	Confirmed	KO4UQF		Ability to recharge battery
First-Aid Kit	Confirmed	W1JKU		
Lighting for HQ	Confirmed	W1JKU	KO4YQF	LED Lights.
Fire Extinguisher	Confirmed	W1JKU		
550 Cord	Confirmed	KO4UQF		
Headphones/splitter/speaker	W1JKU	TBD		Used with ID5100
10x10 Popup	Confirmed	KO4UQF		

Landing Zone- Medevac

Landing Zone Standards

As volunteer ARES/CARS members spend many weekends in remote areas, it is important to understand basic LZ Standards when and if a MEDEVAC is required by air. Some of the places we may travel, are far from the beaten path. A MEDEVAC request through 911 may be your best option. This section provides a brief overview of the requirements in establishing a Landing Zone.

- Flat Terrain clear of debris and brush taller than knee high.
- Free of obstructions including fences power lines, wires, etc.
- Minimum terrain of 60 x 60 feet, Ideal is 100 x 100 feet.
- Maintain additional 200' perimeter keeping bystanders away from the approaching aircraft.
- Mark each corner of LZ with VX17 panel, flares, chem-lite sticks, parked vehicles, or red lights.
- Helicopters prefer to land into the wind.
- If overhead obstacle (power lines) park vehicle under power lines as point of reference for pilot.
- Notify Aircraft or 911 how LZ is arranged including obstacles, markings, etc.
- Notify Aircraft or 911 the direction of Wind (N-S-E-W) and strength (calm, light, variable, strong).
- Notify Aircraft or 911 the Clearest path of Approach is from the (direction). Additional LZ Do/Do Not's
- Do Not Turn on White Lights or Off-Road Lights at night when aircraft is approaching.
- Do not use Engineer Tape/Flag Tape as it can be sucked up into the rotors.
- Do not approach the helicopter until the rotor blades have stopped.
- Do Not walk around the tail of the aircraft, even when aircraft is shut down.
- Take off all Hats, they can be sucked up into the rotors.
- Only approach the helicopter only from the front, once directed by the flight crew.



SAFETY Briefing

- All Volunteers must sign in and out with KJ4RDF upon arrival and prior to departure.
- Do not go anywhere alone, always have a buddy and maintain coms with team. If you leave your point of assignment, communicate with HQ prior for permission and tracking.
- No Generators or fires will be in or proximity to sleeping quarters. Carbon Monoxide is a silent killer.
- Store Fuel cans out of the sun and away from Generators or sources of ignition.
- A Fire Extinguisher must be within 25' of all Generators.
- In case of lightening or severe weather, disconnect all antennas, Team will discontinue Normal Operations. No Personnel will be in the wood-line, Get to open ground. Lightening will travel through the root-systems underneath your feet. Branches and limbs falling from trees induce high risk of impalement. We will coordinate with AID Station and continue to track runners with the least amount of Personnel and limit risk to weather. When weather has passed, KJ4RDF will conduct a safety assessment before return to operation.
- Safety Vests, Jackets, or Reflective Clothing must be worn by all Personnel.
- Leave Wildlife and snakes alone.
- Use Common Sense, Look after your team and if you see an Unsafe Act, Stop it, and report it to HQ when situation allows.
- Be Safe, have a great day, enjoy giving back to the Community and Remember, you are representing Cherokee County!